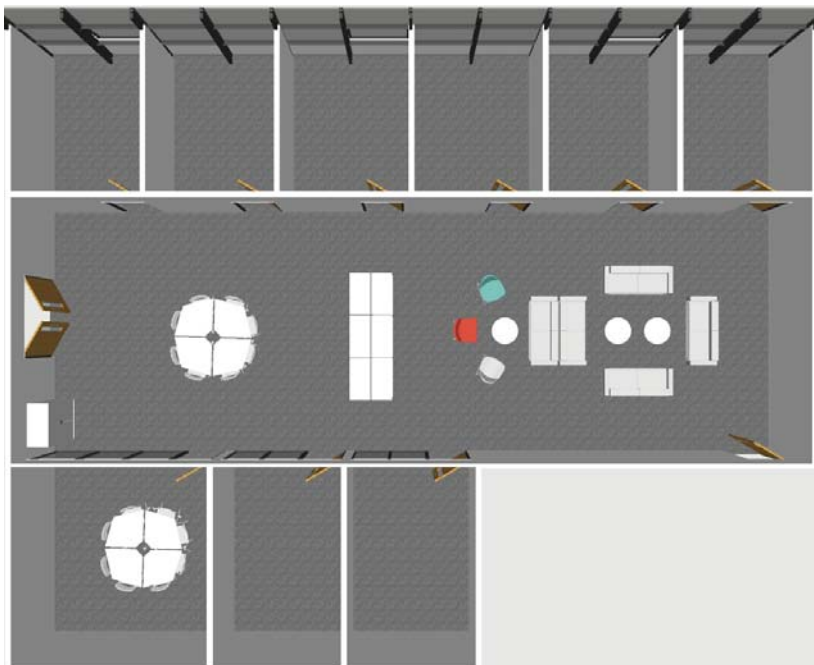


# ATB 3102-11



## Room Contents

- 16 Carver Chairs
- 5 Raft Two Seater Sofas (Grey)
- 8 Kite Tables
- 3 Circular Coffee Tables
- 6 Low Tambour Units
- 1 Tall Tambour Unit

## Please

- Move furniture within the room as you wish but return it to the above layout before you leave.
- Don't move furniture between rooms.
- Finish 10 minutes early.
- Turn off the equipment when you leave.
- Take any litter to the nearest bin.

---

## Help and Feedback

Space Management	<a href="mailto:space@lincoln.ac.uk">space@lincoln.ac.uk</a>
Security	01522 88 6062
ICT / AV Support	01522 88 6500 or <a href="mailto:support.lincoln.ac.uk">support.lincoln.ac.uk</a>
Estates Support (Porters/ Cleaning/ Maintenance)	01522 88 6777 or <a href="mailto:estatessupport@lincoln.ac.uk">estatessupport@lincoln.ac.uk</a>