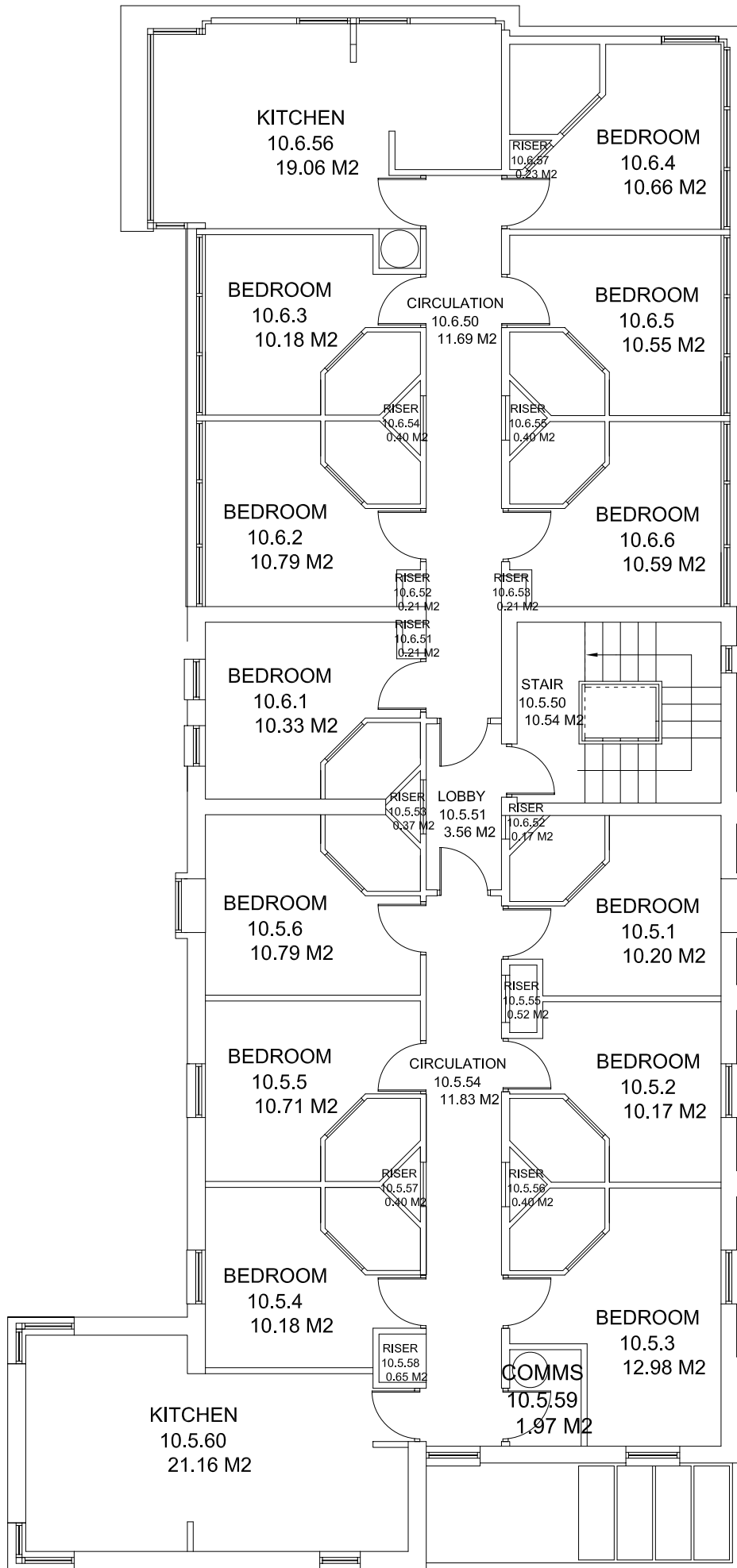
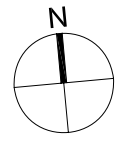


**BR-027 Court 10 Room Schedule**

PRN	Room Name	Room Number	Area	GIA/GEA/NIA/NET	Floor	Department	Faculty/Service
BR-027	Bedroom	10.5.1	10.20 M2	NIA Space	02	--	--
BR-027	Bedroom	10.6.2	10.79 M2	NIA Space	02	--	--
BR-027	Bedroom	10.6.5	10.55 M2	NIA Space	02	--	--
BR-027	Bedroom	10.6.4	10.66 M2	NIA Space	02	--	--
BR-027	Bedroom	10.5.2	10.17 M2	NIA Space	02	--	--
BR-027	Bedroom	10.5.5	10.71 M2	NIA Space	02	--	--
BR-027	Bedroom	10.5.3	12.98 M2	NIA Space	02	--	--
BR-027	Bedroom	10.5.4	10.18 M2	NIA Space	02	--	--
BR-027	Bedroom	10.6.6	10.59 M2	NIA Space	02	--	--
BR-027	Bedroom	10.5.6	10.79 M2	NIA Space	02	--	--
BR-027	Bedroom	10.6.1	10.33 M2	NIA Space	02	--	--
BR-027	Bedroom	10.6.3	10.18 M2	NIA Space	02	--	--
BR-027	Circulation	10.5.54	11.83 M2	Balance Space	02	--	--
BR-027	Circulation	10.6.50	11.69 M2	Balance Space	02	--	--
BR-027	Comms	10.5.59	1.97 M2	NIA Space	02	--	--
BR-027	GEA Space	--	247.05 M2	GEA Space	02	--	--
BR-027	GIA Space	--	228.36 M2	GIA Space	02	--	--
BR-027	Kitchen	10.5.60	21.16 M2	NIA Space	02	--	--
BR-027	Kitchen	10.6.56	19.06 M2	NIA Space	02	--	--
BR-027	Lobby	10.5.51	3.56 M2	Balance Space	02	--	--
BR-027	Riser	10.5.55	0.52 M2	Balance Space	02	--	--
BR-027	Riser	10.5.56	0.40 M2	Balance Space	02	--	--
BR-027	Riser	10.6.52	0.17 M2	Balance Space	02	--	--
BR-027	Riser	10.5.57	0.40 M2	Balance Space	02	--	--
BR-027	Riser	10.5.58	0.65 M2	Balance Space	02	--	--
BR-027	Riser	10.6.54	0.40 M2	Balance Space	02	--	--
BR-027	Riser	10.6.55	0.40 M2	Balance Space	02	--	--
BR-027	Riser	10.6.57	0.23 M2	Balance Space	02	--	--
BR-027	Riser	10.5.53	0.37 M2	Balance Space	02	--	--
BR-027	Riser	10.6.53	0.21 M2	Balance Space	02	--	--
BR-027	Riser	10.6.52	0.21 M2	Balance Space	02	--	--
BR-027	Riser	10.6.51	0.21 M2	Balance Space	02	--	--
BR-027	Stair	10.5.50	10.54 M2	Balance Space	02	--	--



NOTES  
CONTRACTOR TO CHECK ALL DIMENSIONS ON SITE  
DO NOT SCALE



Rev	Description	Date	Drawn

ESTATES AND FACILITIES  
SERVICE BUILDING  
BRAYFORD POOL  
LINCOLN LN6 7TS  
UNIVERSITY OF LINCOLN  
TEL: 01522 886749 FAX: 01522 886247

PRN. No. **BR-027**

PROJECT. **Court 10 Archive**

PROJECT No. **N/A**

DWG TITLE. **Second Floor Plan**

DWG No. **1020** REV **\***

DRWN BY. **JB** CHECKED BY.

SCALE. A1 @ **1:50** DATE **28/06/11**