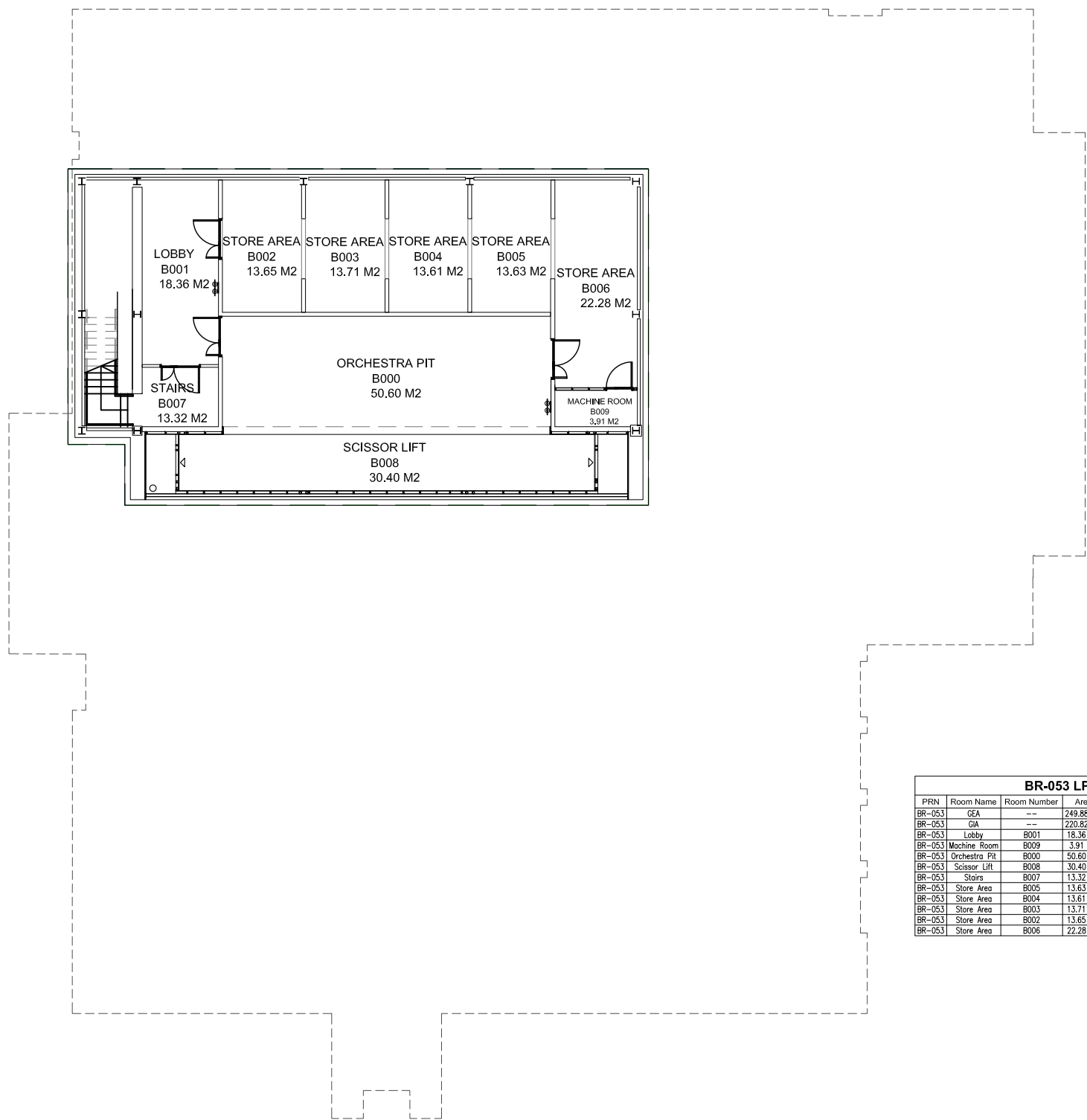
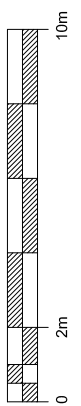
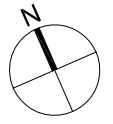


NOTES
 CONTRACTOR TO CHECK ALL DIMENSIONS ON SITE
 DO NOT SCALE



BR-053 LPAC Room Schedule

PRN	Room Name	Room Number	Area	GA/GEA/NA/NET	Floor	Department	Faculty/Service
BR-053	GEA	--	249.88 M2	GEA Space	B	--	--
BR-053	GIA	--	220.82 M2	GIA Space	B	--	--
BR-053	Lobby	B001	18.36 M2	Balance Space	B	--	--
BR-053	Machine Room	B009	3.91 M2	Balance Space	B	--	--
BR-053	Orchestra Pit	B000	50.60 M2	NIA Space	B	--	--
BR-053	Scissor Lift	B008	30.40 M2	NIA Space	B	--	--
BR-053	Stairs	B007	13.32 M2	Balance Space	B	--	--
BR-053	Store Area	B005	13.63 M2	NIA Space	B	--	--
BR-053	Store Area	B004	13.61 M2	NIA Space	B	--	--
BR-053	Store Area	B003	13.71 M2	NIA Space	B	--	--
BR-053	Store Area	B002	13.65 M2	NIA Space	B	--	--
BR-053	Store Area	B006	22.28 M2	NIA Space	B	--	--

Rev	Description	Date	Drwn



PRN No. **BR-053**
 PROJECT **Lincoln Performing Arts Centre Archive**
 PROJECT No. **N/A**
 DWG TITLE **Basement Floor Plan**
 DWG No. **1000** REV *****
 DRWN BY **JB** CHECKED BY
 SCALE **A1@ 1:100** DATE **20.12.13**

1000 Basement Plan
 1:200 at A3