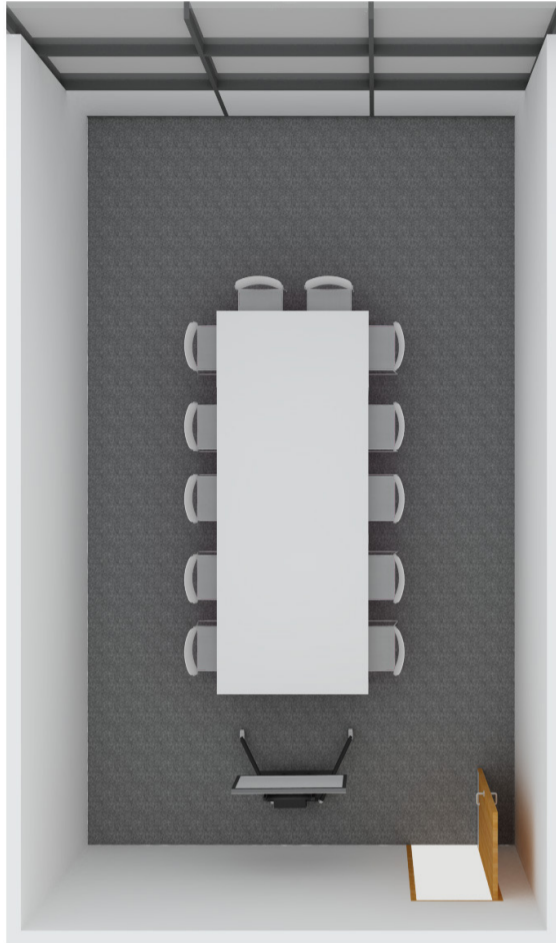


MB2303



UNIVERSITY OF
LINCOLN



Room Contents

12 Chairs

5 Tables

1 Mobile TV

1 Bin

[This furniture is mobile.](#)

Please

- Move furniture within the room as you wish but return it to the above layout before you leave.
- Don't move furniture between rooms.
- Finish 10 minutes early.
- Turn off the equipment when you leave.
- Take any litter to the nearest bin.

Help and Feedback

Space Management

space@lincoln.ac.uk

Security

01522 88 6062

ICT / AV Support

01522 88 6500 or support.lincoln.ac.uk

Estates Support

01522 88 6777 or estatesupport@lincoln.ac.uk

(Porters/ Cleaning/ Maintenance)

Room Information Panel Version 1.7 August 2017

Book a room online at Incn.eu/rb