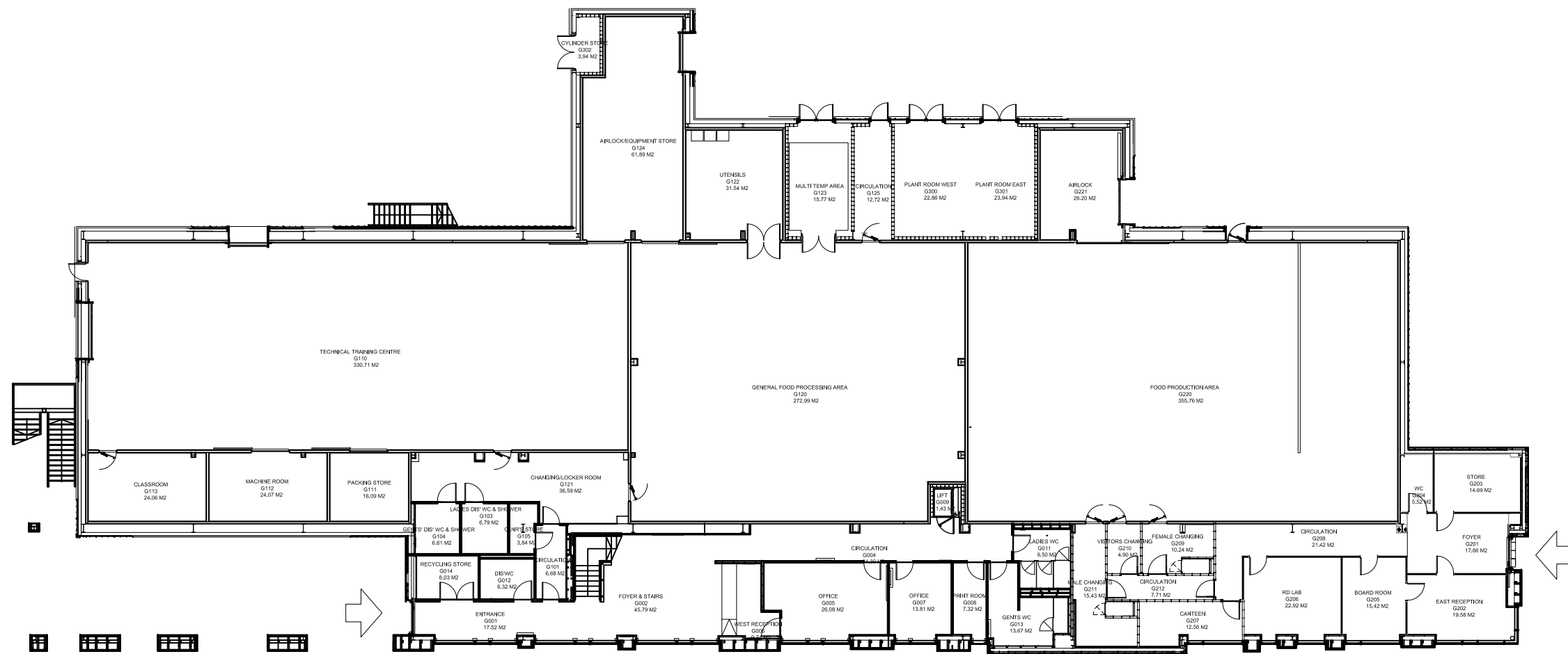
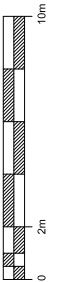
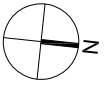


NOTES
CONTRACTOR TO CHECK ALL DIMENSIONS ON SITE
DO NOT SCALE



PRN	Room Name	Room Number	Area	GA/GEA/NA/NET	Floor	Department	Faculty/Service
HO-003	Airlock	G221	26.20 M2	NIA Space	G	---	---
HO-003	Airlock/Equipment Store	G124	61.89 M2	NIA Space	G	---	---
HO-003	Board Room	G205	15.42 M2	NIA Space	G	---	---
HO-003	Canteen	G207	12.56 M2	NIA Space	G	---	---
HO-003	Changing/Locker Room	G121	36.59 M2	NIA Space	G	---	---
HO-003	Circulation	G101	6.88 M2	Balance Space	G	---	---
HO-003	Circulation	G004	31.30 M2	Balance Space	G	---	---
HO-003	Circulation	G208	21.42 M2	Balance Space	G	---	---
HO-003	Circulation	G125	12.72 M2	Balance Space	G	---	---
HO-003	Circulation	G212	7.71 M2	Balance Space	G	---	---
HO-003	Classroom	G113	24.06 M2	NIA Space	G	---	---
HO-003	Cliv's Store	G105	3.84 M2	Balance Space	G	---	---
HO-003	Cylinder Store	G302	3.94 M2	NIA Space	G	---	---
HO-003	Dis'WC	G012	6.32 M2	Balance Space	G	---	---
HO-003	East Reception	G202	19.58 M2	NIA Space	G	---	---
HO-003	Entrance	G001	17.52 M2	Balance Space	G	---	---
HO-003	Female Changing	G209	10.24 M2	Balance Space	G	---	---
HO-003	Food Production Area	G200	355.76 M2	NIA Space	G	---	---
HO-003	Foyer	G201	17.86 M2	Balance Space	G	---	---
HO-003	Foyer & Stairs	G002	45.79 M2	Balance Space	G	---	---
HO-003	GEA	---	1856.88 M2	GEA Space	G	---	---
HO-003	GA	---	1724.11 M2	GA Space	G	---	---
HO-003	General Food Processing Area	G120	272.99 M2	NIA Space	G	---	---

PRN	Room Name	Room Number	Area	GA/GEA/NA/NET	Floor	Department	Faculty/Service
HO-003	Gents WC	G013	13.67 M2	Balance Space	G	---	---
HO-003	Gents Dis' WC & Shower	G104	6.61 M2	Balance Space	G	---	---
HO-003	Ladies Dis' WC & Shower	G103	6.79 M2	Balance Space	G	---	---
HO-003	Ladies WC	G011	9.50 M2	Balance Space	G	---	---
HO-003	Lift	G009	1.43 M2	Balance Space	G	---	---
HO-003	Machine Room	G112	24.07 M2	NIA Space	G	---	---
HO-003	Male Changing	G211	15.43 M2	Balance Space	G	---	---
HO-003	Multi Temp Area	G123	15.77 M2	NIA Space	G	---	---
HO-003	Office	G005	26.08 M2	NIA Space	G	---	---
HO-003	Office	G007	13.81 M2	NIA Space	G	---	---
HO-003	Packing Store	G111	16.09 M2	NIA Space	G	---	---
HO-003	Plant Room East	G301	23.94 M2	Balance Space	G	---	---
HO-003	Plant Room West	G300	22.86 M2	Balance Space	G	---	---
HO-003	Print Room	G008	7.32 M2	NIA Space	G	---	---
HO-003	RD Lab	G206	22.92 M2	NIA Space	G	---	---
HO-003	Recycling Store	G014	8.03 M2	Balance Space	G	---	---
HO-003	Store	G203	14.69 M2	NIA Space	G	---	---
HO-003	Technical Training Centre	G110	330.71 M2	NIA Space	G	---	---
HO-003	Utensils	G122	31.54 M2	NIA Space	G	---	---
HO-003	Visitors Changing	G210	4.90 M2	Balance Space	G	---	---
HO-003	WC	G204	5.52 M2	Balance Space	G	---	---
HO-003	West Reception	G006	9.74 M2	Balance Space	G	---	---

Rev	Description	Date	Drawn



PRN No.	HO-003
PROJECT	National Centre for Food Manufacturing
PROJECT No.	NIA
DWG TITLE	Ground Floor Plan
DWG No.	1000
REV	*
DRWN BY	JB
CHECKED BY	
SCALE	A0@ 1:100
DATE	26.12.13

1000 Ground Floor Plan
1:200 at A1