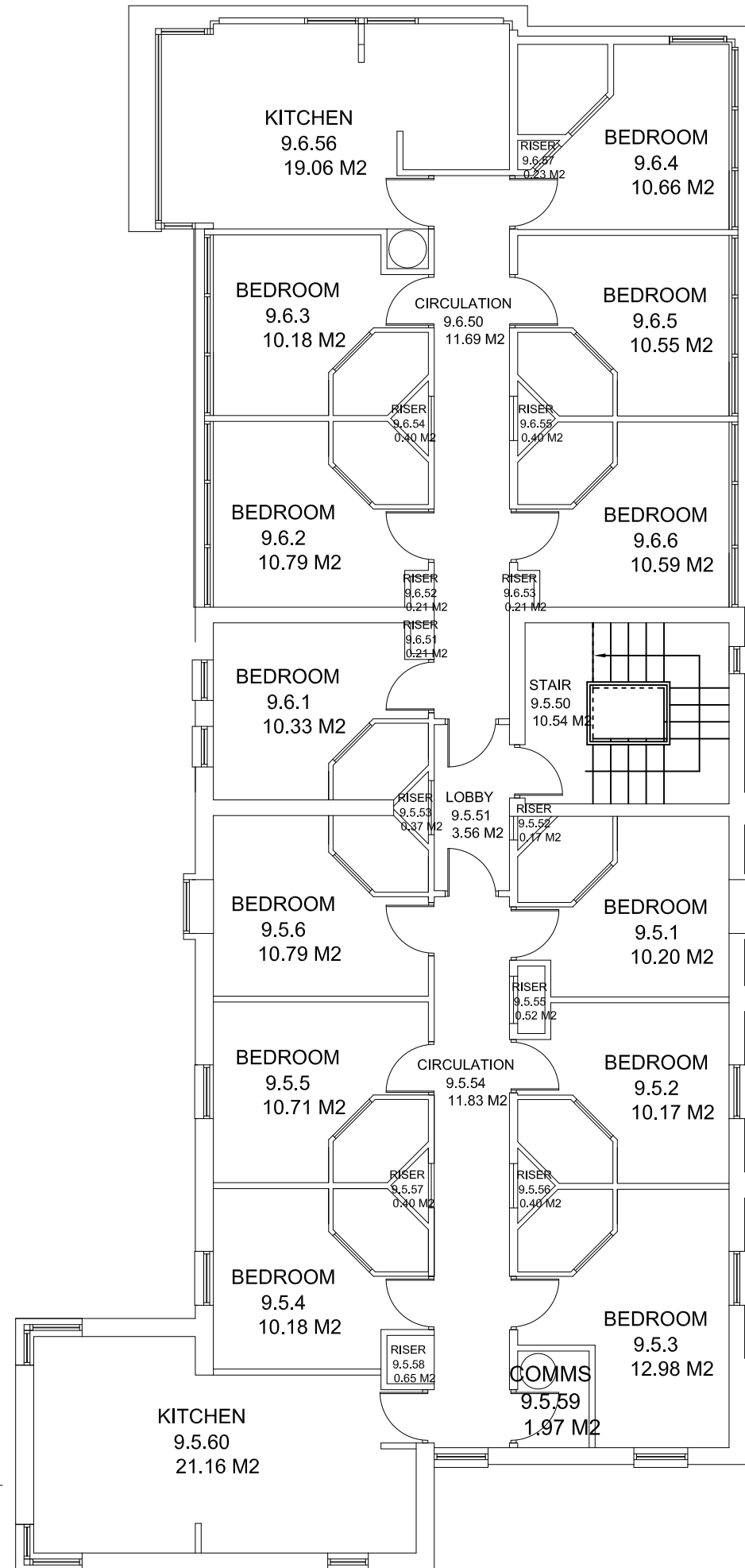


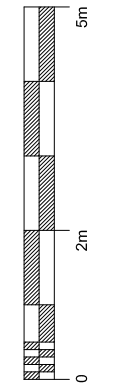
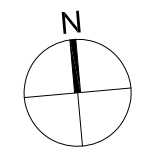


**BR-026 Court 9 Room Schedule**


PRN	Room Name	Room Number	Area	GIA/GEA/NIA/NET	Floor	Department	Faculty/Service
BR-026	Bedroom	9.5.1	10.20 M2	NIA Space	02	--	--
BR-026	Bedroom	9.6.2	10.79 M2	NIA Space	02	--	--
BR-026	Bedroom	9.6.5	10.55 M2	NIA Space	02	--	--
BR-026	Bedroom	9.6.4	10.66 M2	NIA Space	02	--	--
BR-026	Bedroom	9.5.2	10.17 M2	NIA Space	02	--	--
BR-026	Bedroom	9.5.5	10.71 M2	NIA Space	02	--	--
BR-026	Bedroom	9.5.3	12.98 M2	NIA Space	02	--	--
BR-026	Bedroom	9.5.4	10.18 M2	NIA Space	02	--	--
BR-026	Bedroom	9.6.6	10.59 M2	NIA Space	02	--	--
BR-026	Bedroom	9.5.6	10.79 M2	NIA Space	02	--	--
BR-026	Bedroom	9.6.1	10.33 M2	NIA Space	02	--	--
BR-026	Bedroom	9.6.3	10.18 M2	NIA Space	02	--	--
BR-026	Circulation	9.5.54	11.83 M2	Balance Space	02	--	--
BR-026	Circulation	9.6.50	11.69 M2	Balance Space	02	--	--
BR-026	Comms	9.5.59	1.97 M2	NIA Space	02	--	--
BR-026	GEA Space	--	247.05 M2	GEA Space	02	--	--
BR-026	GIA Space	--	228.36 M2	GIA Space	02	--	--
BR-026	Kitchen	9.5.60	21.16 M2	NIA Space	02	--	--
BR-026	Kitchen	9.6.56	19.06 M2	NIA Space	02	--	--
BR-026	Lobby	9.5.51	3.56 M2	Balance Space	02	--	--
BR-026	Riser	9.5.55	0.52 M2	Balance Space	02	--	--
BR-026	Riser	9.5.56	0.40 M2	Balance Space	02	--	--
BR-026	Riser	9.5.52	0.17 M2	Balance Space	02	--	--
BR-026	Riser	9.5.57	0.40 M2	Balance Space	02	--	--
BR-026	Riser	9.5.58	0.65 M2	Balance Space	02	--	--
BR-026	Riser	9.6.54	0.40 M2	Balance Space	02	--	--
BR-026	Riser	9.6.55	0.40 M2	Balance Space	02	--	--
BR-026	Riser	9.6.57	0.23 M2	Balance Space	02	--	--
BR-026	Riser	9.5.53	0.37 M2	Balance Space	02	--	--
BR-026	Riser	9.6.53	0.21 M2	Balance Space	02	--	--
BR-026	Riser	9.6.52	0.21 M2	Balance Space	02	--	--
BR-026	Riser	9.6.51	0.21 M2	Balance Space	02	--	--
BR-026	Stair	9.5.50	10.54 M2	Balance Space	02	--	--



NOTES  
CONTRACTOR TO CHECK ALL DIMENSIONS ON SITE  
DO NOT SCALE



1020 Second Floor Plan  
1:100 at A3

Rev	Description	Date	Drwn
 ESTATES AND COMMERCIAL FACILITIES BRAYFORD POOL LINCOLN LN61 7TS TEL: 01522 886749 FAX: 01522 886247			
PRN No.	BR-026		
PROJECT	Court 9 Archive		
PROJECT No.	N/A		
DWG TITLE	Second Floor Plan		
DWG No.	1020	REV	*
DRWN BY	JB	CHECKED BY	
SCALE	A1 @ 1:50	DATE	01.02.14